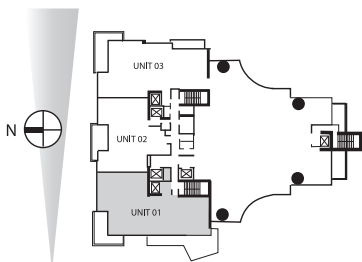
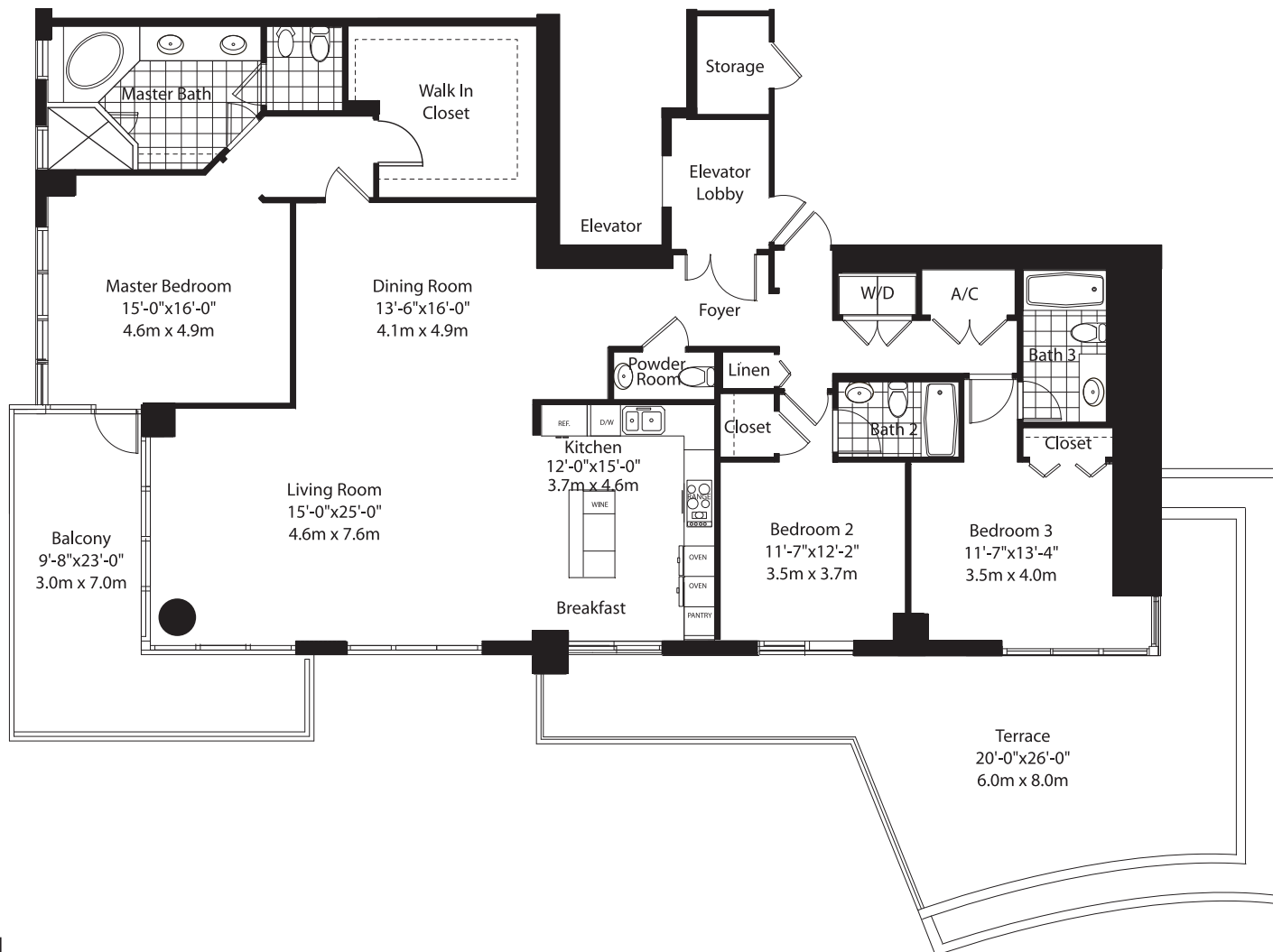


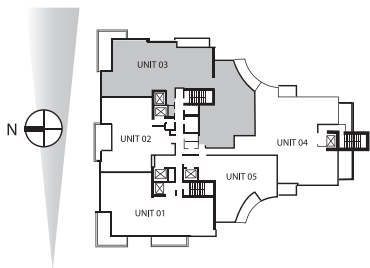
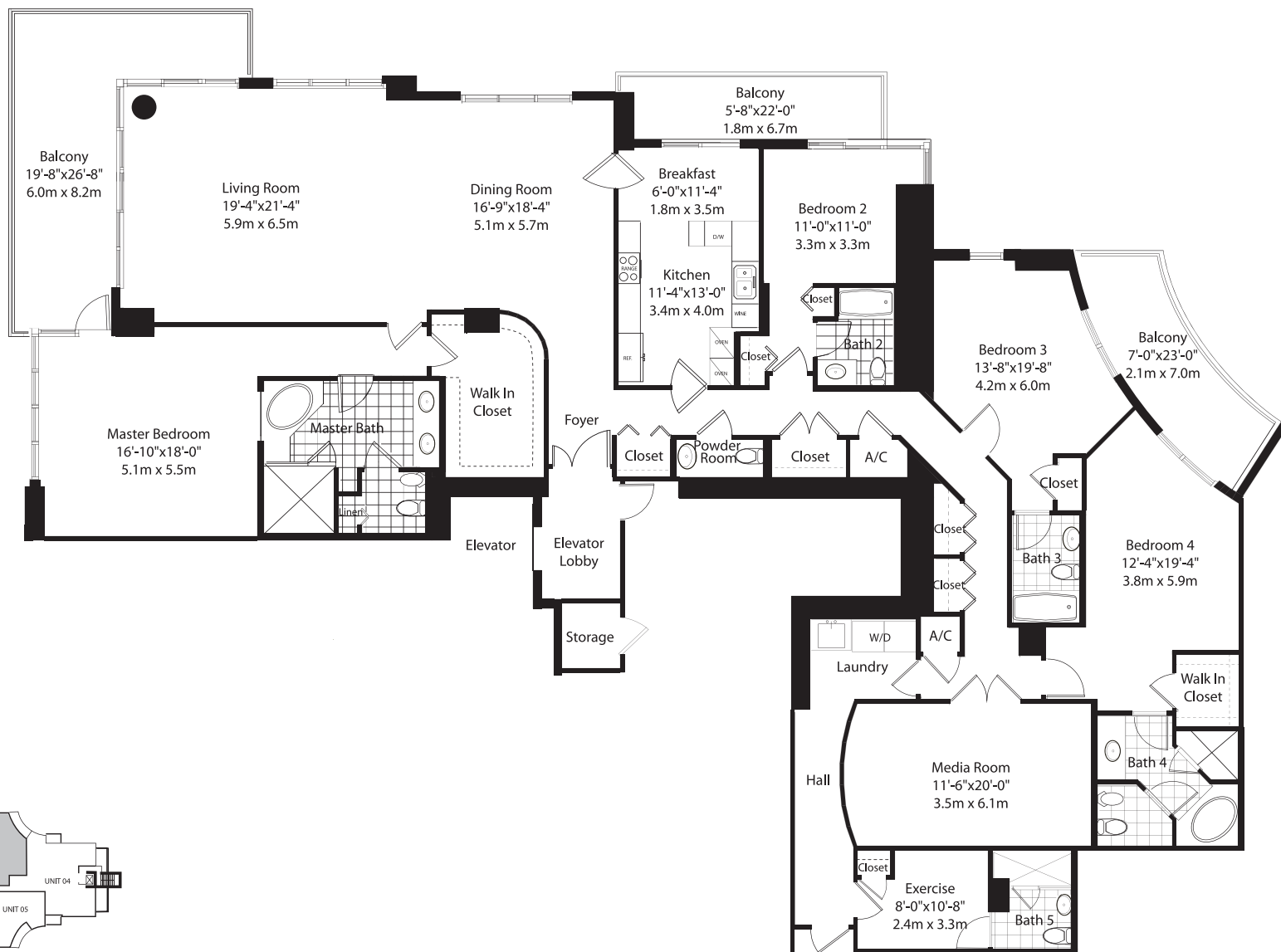
ENCLOSED AREA	1,781 SF*	164 SM
BALCONY/TERRACE	208 SF	19 SM
TOTAL RESIDENCE	1,989 SF	183 SM

Not to scale. All dimensions are approximate and all floorplans and development plans are subject to change in accordance with the agreement for sale. Oral representations cannot be relied upon as correctly stating the representations of the developer. For correct representations, make reference to the documents required by section 718.503 Florida Statutes to be furnished by developer to buyer or lessee. Stated dimensions are measured to the exterior boundaries of exterior walls, corridor walls and to the centerline of interior demising walls. *The unit as measured by this standard architectural technique varies from the Unit Area defined in the Declaration which is 1,572 SF.*



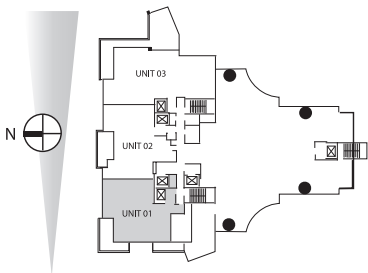
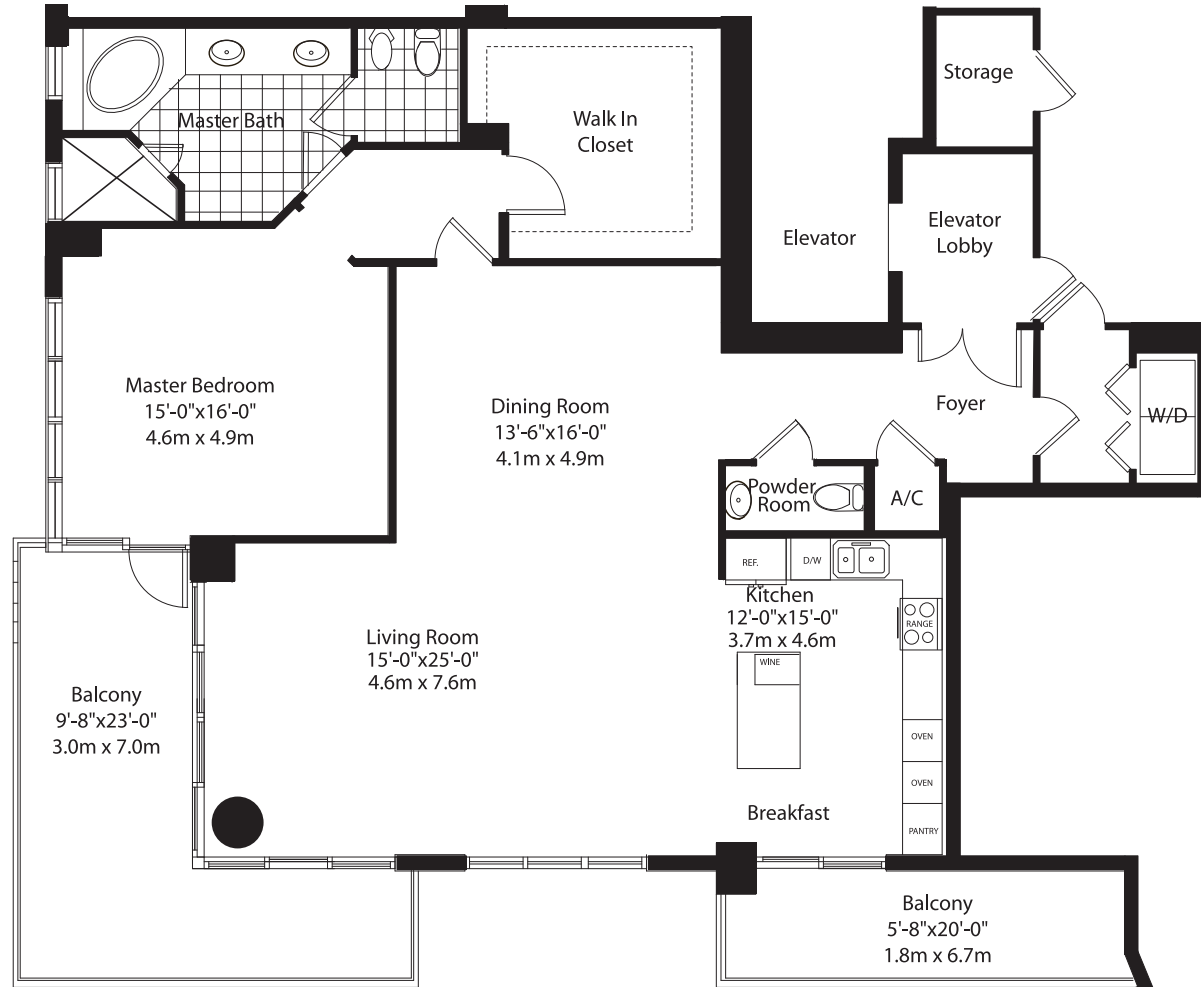
ENCLOSED AREA	2,388 SF*	220 SM
BALCONY/TERRACE	754 SF	69 SM
TOTAL RESIDENCE	3,142 SF	289 SM

Not to scale. All dimensions are approximate and all floorplans and development plans are subject to change in accordance with the agreement for sale. Oral representations cannot be relied upon as correctly stating the representations of the developer. For correct representations, make reference to the documents required by section 718.503 Florida Statutes to be furnished by developer to buyer or lessee. Stated dimensions are measured to the exterior boundaries of exterior walls, corridor walls and to the centerline of interior demising walls.* The unit as measured by this standard architectural technique varies from the Unit Area defined in the Declaration which is 2,067 SF.*



ENCLOSED AREA	3,813 SF*	350 SM
BALCONY/TERRACE	553 SF	51 SM
TOTAL RESIDENCE	4,366 SF	401 SM

Not to scale. All dimensions are approximate and all floorplans and development plans are subject to change in accordance with the agreement for sale. Oral representations cannot be relied upon as correctly stating the representations of the developer. For correct representations, make reference to the documents required by section 718.503 Florida Statutes to be furnished by developer to buyer or lessee. Stated dimensions are measured to the exterior boundaries of exterior walls, corridor walls and to the centerline of interior demising walls. *The unit as measured by this standard architectural technique varies from the Unit Area defined in the Declaration which is 3,398 SF*



ENCLOSED AREA	1,662 SF*	153 SM
BALCONY/TERRACE	361 SF	33 SM
TOTAL RESIDENCE	2,023 SF	186 SM

Not to scale. All dimensions are approximate and all floorplans and development plans are subject to change in accordance with the agreement for sale. Oral representations cannot be relied upon as correctly stating the representations of the developer. For correct representations, make reference to the documents required by section 718.503 Florida Statutes to be furnished by developer to buyer or lessee. Stated dimensions are measured to the exterior boundaries of exterior walls, corridor walls and to the centerline of interior demising walls. * The unit as measured by this standard architectural technique varies from the Unit Area defined in the Declaration which is 1,602 SF.*