

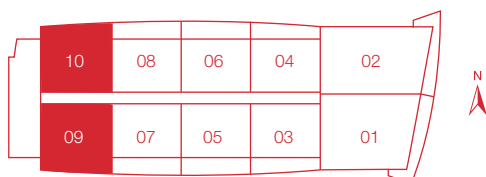
UNIT 09 & 10

BEACHWALK CONDOMINIUM

2 BEDROOMS
2 BATHROOMS

RESIDENCE 1087 Sq.Ft 100.9 Mts²
BALCONIES 221 Sq.Ft 20.5 Mts²

TOTAL UNIT **1308 Sq.Ft 121.5 Mts²**



Stated dimensions are measured to the exterior boundaries of the exterior walls and the centerline of interior demising walls and in fact vary from the dimensions that would be determined by using the description and definition of the "Unit" set forth in the Declaration (which generally only includes the interior airspace between the perimeter walls and excludes interior structural component). For your reference, the area of the Unit, determined in accordance with those defined unit boundaries, is 1308 Sq.Ft. Note that measurements of rooms set forth on this floorplan are generally taken at the greatest points of each given room (as if the room were a perfect rectangle), without regard for any cutouts. Accordingly, the area of the actual room will typically be smaller than the product obtained by multiplying the stated length times width. All dimensions are approximate and may vary with actual construction, and all floorplans and development plans are subject to change.



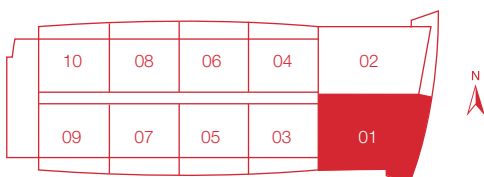
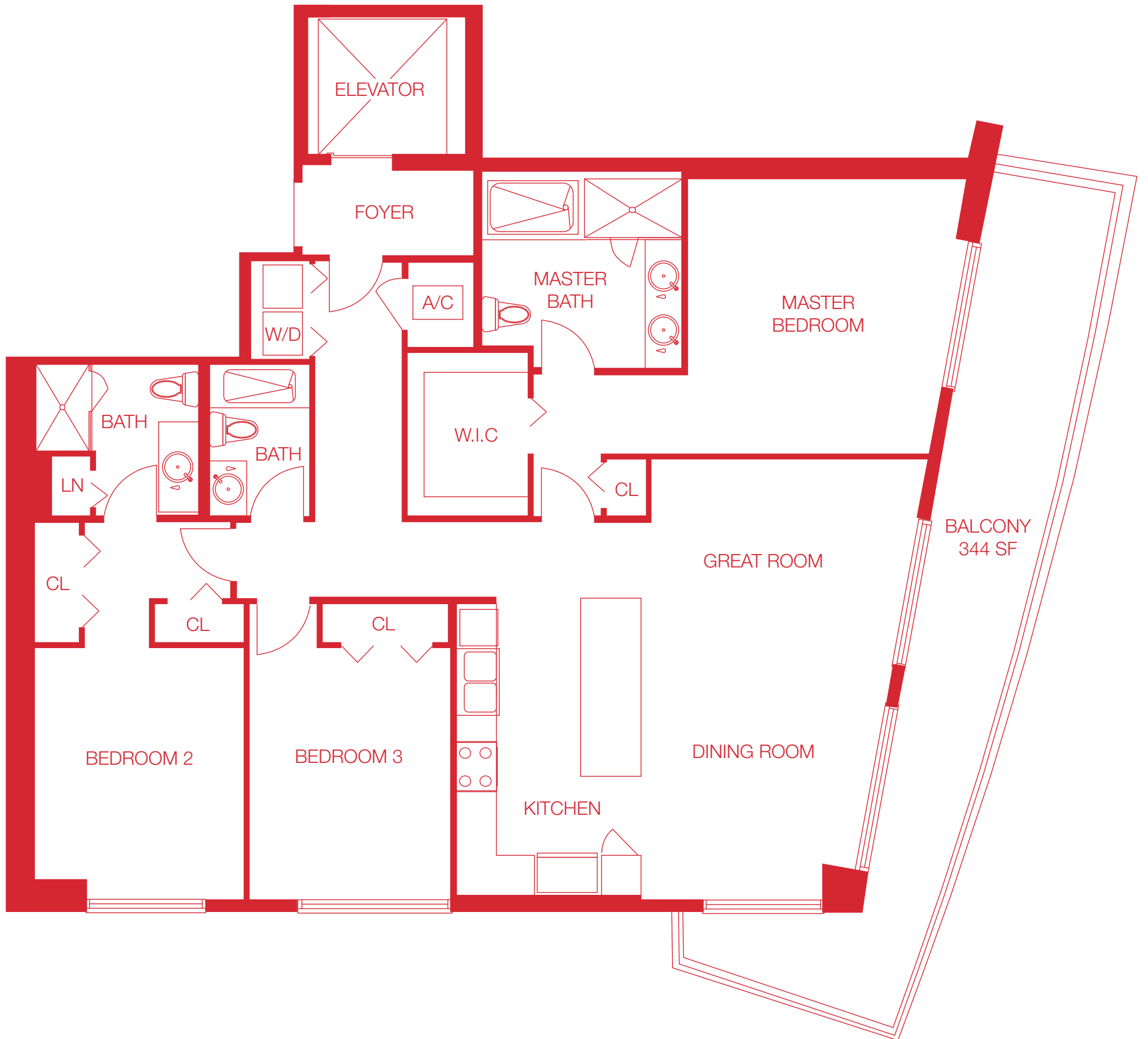
UNIT 01

BEACHWALK CONDOMINIUM

3 BEDROOMS
3 BATHROOMS

RESIDENCE 1853 Sq.Ft 172.1 Mts²
BALCONIES 344 Sq.Ft 31.9 Mts²

TOTAL UNIT 2197 Sq.Ft 204.1 Mts²



Stated dimensions are measured to the exterior boundaries of the exterior walls and the centerline of interior demising walls and in fact vary from the dimensions that would be determined by using the description and definition of the "Unit" set forth in the Declaration (which generally only includes the interior airspace between the perimeter walls and excludes interior structural component). For your reference, the area of the Unit, determined in accordance with those defined unit boundaries, is 2197 Sq.Ft. Note that measurements of rooms set forth on this floorplan are generally taken at the greatest points of each given room (as if the room were a perfect rectangle), without regard for any cutouts. Accordingly, the area of the actual room will typically be smaller than the product obtained by multiplying the stated length times width. All dimensions are approximate and may vary with actual construction, and all floorplans and development plans are subject to change.



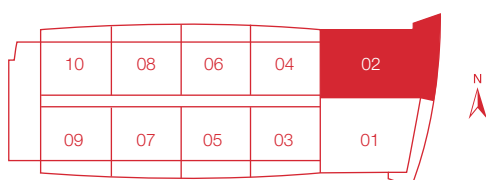
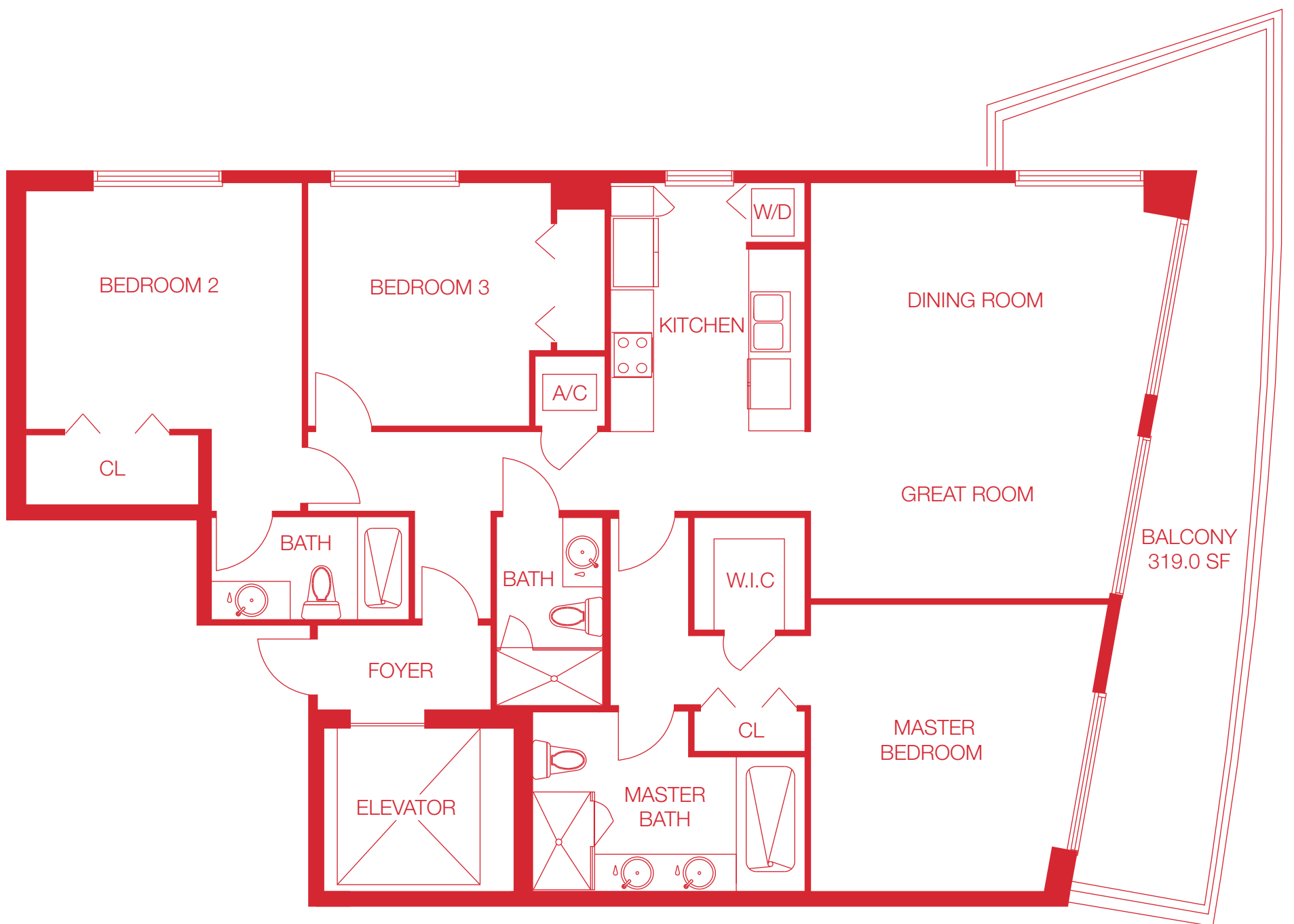
UNIT 02

BEACHWALK CONDOMINIUM

3 BEDROOMS
3 BATHROOMS

RESIDENCE 1711 Sq.Ft 158.9 Mts²
BALCONIES 319 Sq.Ft 29.6 Mts²

TOTAL UNIT **2030 Sq.Ft 188.5 Mts²**



Stated dimensions are measured to the exterior boundaries of the exterior walls and the centerline of interior demising walls and in fact vary from the dimensions that would be determined by using the description and definition of the "Unit" set forth in the Declaration (which generally only includes the interior airspace between the perimeter walls and excludes interior structural component). For your reference, the area of the Unit, determined in accordance with those defined unit boundaries, is 2030 Sq.Ft. Note that measurements of rooms set forth on this floorplan are generally taken at the greatest points of each given room (as if the room were a perfect rectangle), without regard for any cutouts. Accordingly, the area of the actual room will typically be smaller than the product obtained by multiplying the stated length times width. All dimensions are approximate and may vary with actual construction, and all floorplans and development plans are subject to change.



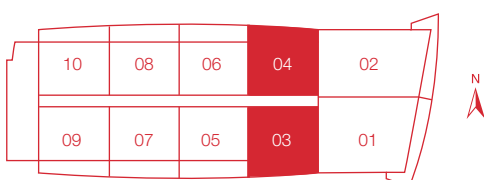
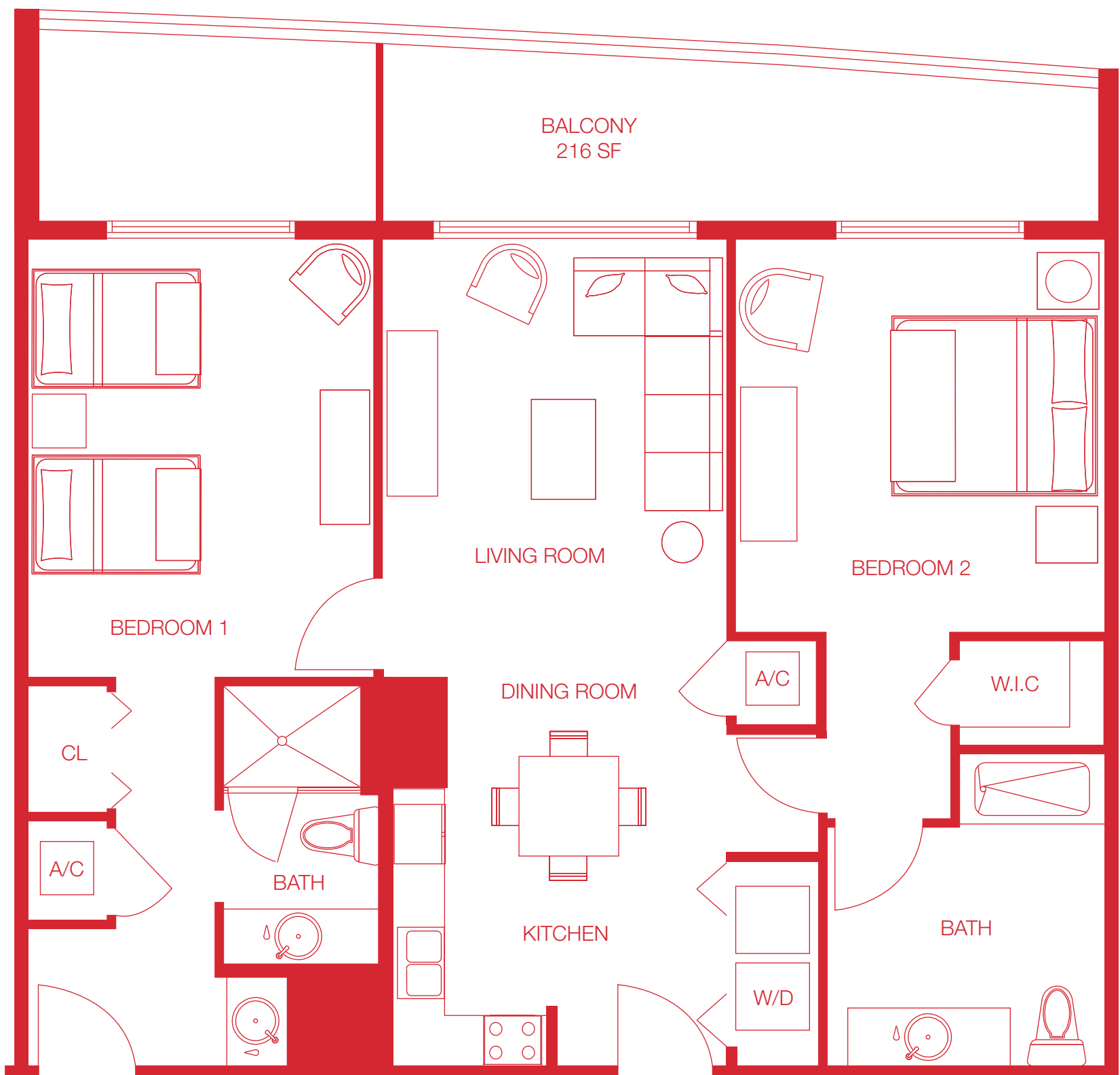
UNIT 03 & 04

BEACHWALK CONDOMINIUM

2 BEDROOMS
2 BATHROOMS

RESIDENCE 1096 Sq.Ft 101.8 Mts²
BALCONIES 216 Sq.Ft 20 Mts²

TOTAL UNIT **1312 Sq.Ft 121.8 Mts²**



Stated dimensions are measured to the exterior boundaries of the exterior walls and the centerline of interior demising walls and in fact vary from the dimensions that would be determined by using the description and definition of the "Unit" set forth in the Declaration (which generally only includes the interior airspace between the perimeter walls and excludes interior structural component). For your reference, the area of the Unit, determined in accordance with those defined unit boundaries, is 1312 Sq.Ft. Note that measurements of rooms set forth on this floorplan are generally taken at the greatest points of each given room (as if the room were a perfect rectangle), without regard for any cutouts. Accordingly, the area of the actual room will typically be smaller than the product obtained by multiplying the stated length times width. All dimensions are approximate and may vary with actual construction, and all floorplans and development plans are subject to change.



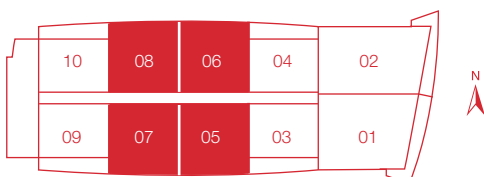
UNIT 05, 06, 07, 08

BEACHWALK CONDOMINIUM

2 BEDROOMS
2 BATHROOMS

RESIDENCE 1100 Sq.Ft 102.1 Mts²
BALCONIES 272 Sq.Ft 25.2 Mts²

TOTAL UNIT **1372 Sq.Ft 127.4 Mts²**



Stated dimensions are measured to the exterior boundaries of the exterior walls and the centerline of interior demising walls and in fact vary from the dimensions that would be determined by using the description and definition of the "Unit" set forth in the Declaration (which generally only includes the interior airspace between the perimeter walls and excludes interior structural component). For your reference, the area of the Unit, determined in accordance with those defined unit boundaries, is 1372 Sq.Ft. Note that measurements of rooms set forth on this floorplan are generally taken at the greatest points of each given room (as if the room were a perfect rectangle), without regard for any cutouts. Accordingly, the area of the actual room will typically be smaller than the product obtained by multiplying the stated length times width. All dimensions are approximate and may vary with actual construction, and all floorplans and development plans are subject to change.

